

Figure S1. Bone metastatic sites in August 2020. (A) Chest CT image showing increased bone density in the 8th thoracic vertebra and adjacent bones (arrow), indicating tumor metastasis. (B) Abdominal CT image showing increased density within the 4th lumbar vertebra (arrow), indicating tumor metastasis. CT, computed tomography.

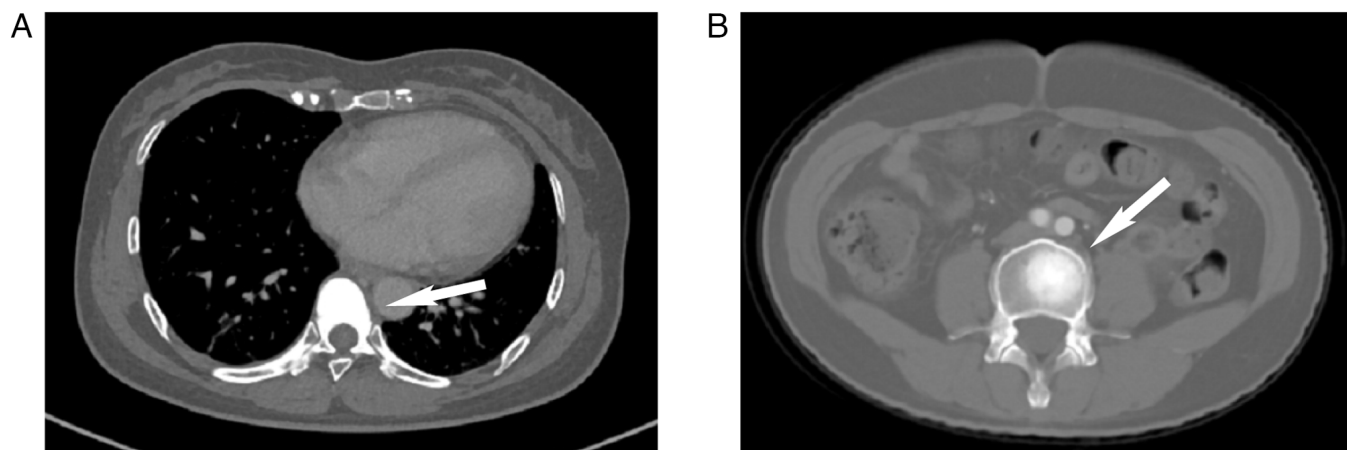


Figure S2. Left scapula metastatic site in October 2020. Chest CT image showing a nodular high-density shadow (arrow) in the left scapula, indicating tumor metastasis. CT, computed tomography.

