

Alignment of Alzheimer's disease amyloid β -peptide and klotho

STEVEN LEHRER¹ and PETER H. RHEINSTEIN²

¹Department of Radiation Oncology, Icahn School of Medicine at Mount Sinai, New York, NY 10029; ²Severn Health Solutions, Severna Park, MD 21146, USA

Received July 20, 2020; Accepted September 21, 2020

DOI: 10.3892/wasj.2020.68

Abstract. The cause of Alzheimer's disease (AD) is poorly understood. In 1991, the amyloid hypothesis postulated that β -amyloid ($A\beta$) accumulation is a key element. It follows that clearing the brain of $A\beta$ would be beneficial, which has not been the case. Therefore, $A\beta$ is likely a result, not a cause, of AD and may be protective rather than harmful. The apolipoprotein E4 (apoE4) allele is the strongest genetic risk factor for AD. Klotho (KL), encoded by the KL gene, may be another AD-related protein. FGF21 is a circulating endocrine hormone, mainly secreted by the liver, mostly during fasting. FGF21 acts by binding to its receptor FGFR1 and co-receptor β -klotho. FGF21 is neuroprotective and could delay onset of AD. In the present study, the KL protein structure was examined to determine whether it may interact with $A\beta$. Protein data bank (pdb) entries for klotho and $A\beta$ were searched on the RCSB Protein Data Bank for β -KL and AD amyloid β -peptide. The protein structures were superimposed and aligned on PYMOL v2.3.4 with the super command, which super aligns two protein selections. To evaluate the conservation and alignment of the $A\beta$ and KL genomes across species, BLAT, the Blast-Like Alignment Tool of the UCSC Genome Browser, was used. The amino acid residues phe76-val96 of KL aligned closely with residues asp7-asn27 of $A\beta$. Cross-species comparison of KL revealed a high degree of alignment and conservation in the chimp and 27 other primates; however, less alignment and conservation were observed in the mouse, dog and elephant, even less in the chicken, western clawed frog (*Xenopus tropicalis*), zebrafish and lamprey. The current finding of amino acid residues phe76-val96 of klotho aligning closely with residues asp7-asn27 of $A\beta$ suggests that $A\beta$ can enhance the ability of klotho to draw FGF21 to regions of incipient neurodegeneration in AD. The problem arises with age. Older individuals do not heal or

repair tissue damage as well as younger individuals. As neurodegeneration advances in an older individual, perhaps caused by neuroinflammation related to herpes simplex virus type 1, increasing amounts of amyloid are produced, forming an adhesive web, as the brain tries to hold the pathologic process in check. Meanwhile, the damage increases and spreads. Progressive neurodegeneration and cognitive decline are the outcome.

Introduction

The cause of Alzheimer's disease (AD) is poorly understood. The disease process is associated with β -amyloid ($A\beta$) plaques, tau neurofibrillary tangles and neuroinflammation. In 1991, the amyloid hypothesis postulated that beta amyloid ($A\beta$) accumulation is a key element (1). $A\beta$ was supposed to stimulate both the development of tau neurofibrillary tangles and neuroinflammation. $A\beta$, tau and inflammation each led to the destruction of neurons and synapses. It follows that clearing the brain of $A\beta$ would be beneficial, which has not been the case. Therefore, $A\beta$ is likely a result, not a cause, of AD (2,3) and may be protective rather than harmful (4).

$A\beta$ has antimicrobial properties (4) and could represent a brain defense against infection (5), in particular against herpes simplex virus 1 (HSV-1). HSV-1 is found in regions of the brain that are affected by AD in elderly individuals. Additionally, neuronal infection with HSV-1 triggers the accumulation of amyloid beta deposits and hyperphosphorylated tau, and results in oxidative stress and synaptic dysfunction. These factors are implicated in the development of AD (6).

The apolipoprotein E4 (apoE4) allele is the strongest genetic risk factor for AD. Approximately 23% of the US population carries an apoE4 allele. The apoE2 allele is less common, 5% incidence, and is protective against AD.

Klotho (KL), encoded by the KL gene, may be another AD-related protein. In mice, elevated KL levels extend lifespan, enhance synaptic function and improve cognition during aging (7). Cognitively normal older individuals who have higher serum KL levels exhibit enhanced functional connectivity among brain regions that degenerate in AD (8).

Approximately 20% of individuals carry a KL variant, KL-VS. Heterozygosity (one copy) of KL-VS increases circulating klotho, while reducing $A\beta$ and lowering AD

Correspondence to: Dr Steven Lehrer, Department of Radiation Oncology, Icahn School of Medicine at Mount Sinai, 1 Gustave L. Levy Place, New York, NY 10029, USA
E-mail: steven.lehrer@mssm.edu

Key words: β -amyloid, Alzheimer's disease, protein, alignment, klotho, aging, neurodegeneration, HSV-1, neuroinflammation, ubiquitin

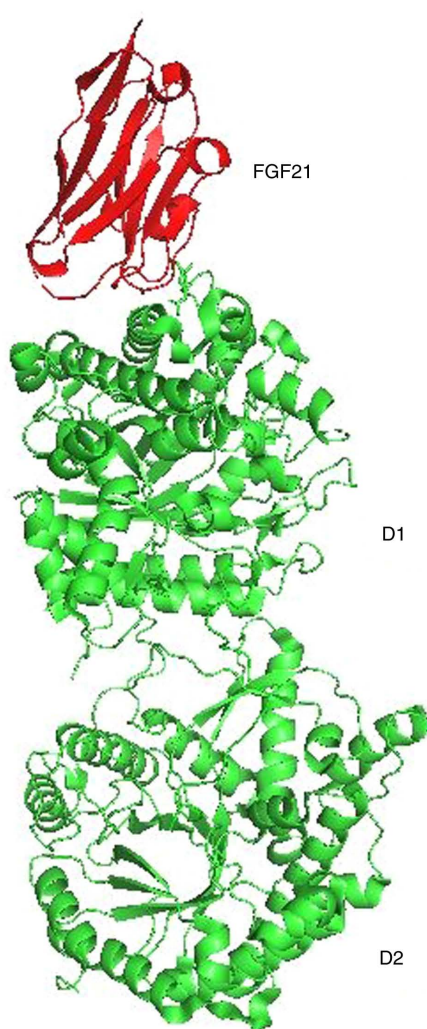


Figure 1. Crystal structure of β -Klotho showing FGF21 (red) bound to domain 1 (D1).

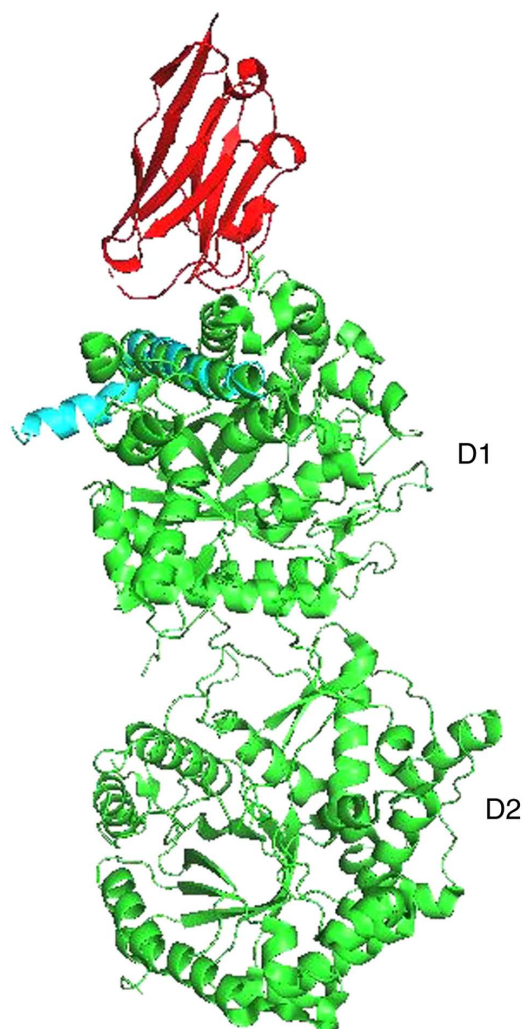


Figure 3. Alignment of klotho peptide (green) domain 1 (D1) with A β (blue). FGF21 (red) is bound to domain 1.

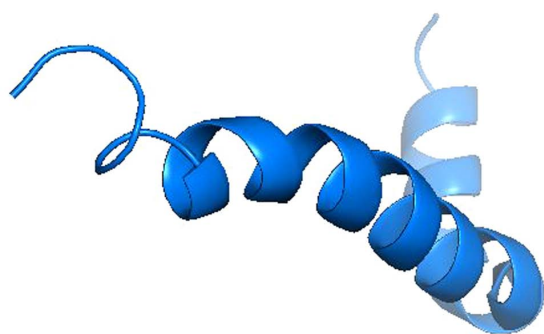


Figure 2. Solution structure of the Alzheimer's disease A β -peptide.

risk in apoE4 carriers who are age 60 to 80 and cognitively normal (9). In the present study, the KL protein structure was examined to determine whether it may interact with A β .

Data collection methods

Protein data bank (pdb) entries for KL and A β were searched on the RCSB Protein Data Bank. The following structures

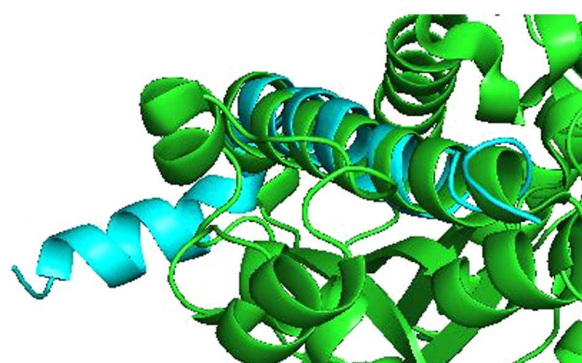


Figure 4. Closeup of alignment. Pymol performed 6 cycles of calculations on 165 aligned atoms, with a final root mean square deviation of atomic positions (RMSD) of 1.792 Å for 148 atoms. Amino acid residues phe76-val96 of klotho aligned closely with residues asp7-asn27 of A β .

were identified: i) 5VAK (Fig. 1), representing the crystal structure of β -KL in complex with FGF21CT (C terminal tail). The method used was X-RAY diffraction. The resolution was 2.61 Å, structure deposited on March 27, 2017 and released on January 31, 2018 (10). ii) 1IYT (Fig. 2), representing the

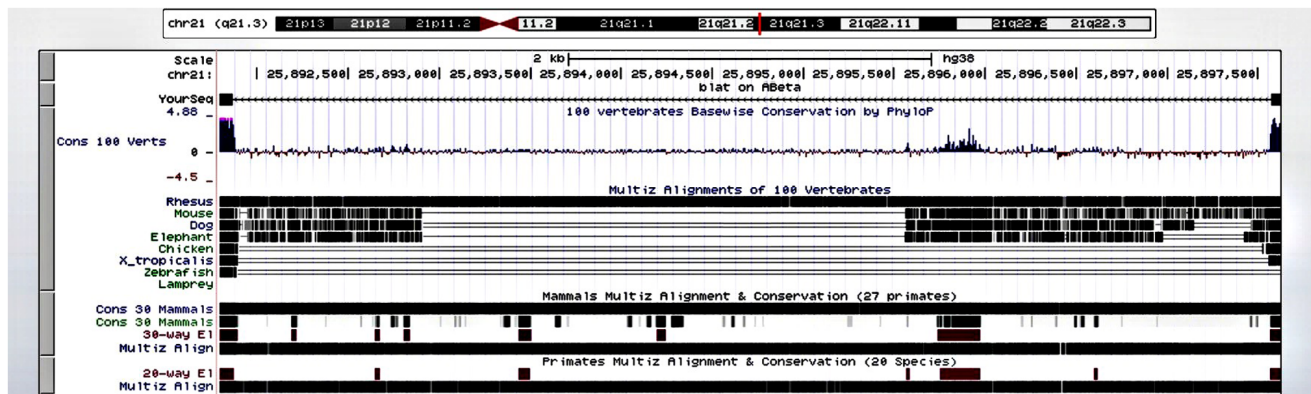


Figure 5. Alignment of 42 amino acid residue human A β across species in the UCSC genome browser. There is a high degree of alignment and conservation of A β (chr 21q21.3) in the rhesus monkey and 27 other primates, but much less alignment and conservation in the mouse, dog, and elephant, even less in the chicken, western clawed frog (*Xenopus tropicalis*), zebrafish and lamprey.

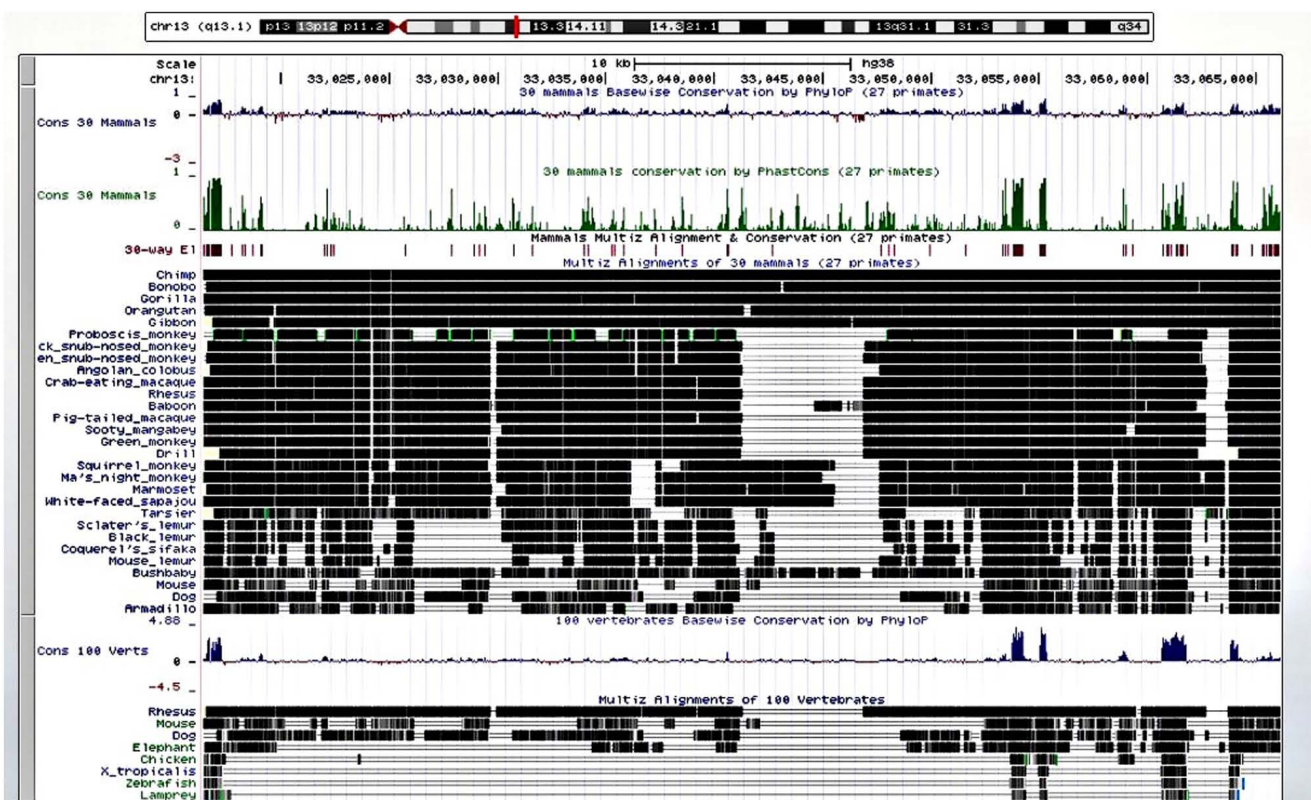


Figure 6. Alignment of human klotho across species in the UCSC genome browser. Results of the cross-species comparison of klotho show a high degree of alignment and conservation of human klotho (chr 13q13.1) in the chimp and 27 other primates, less alignment and conservation in the mouse, dog, and elephant, even less in the chicken, western clawed frog (*Xenopus tropicalis*), zebrafish and lamprey.

solution structure of the AD A β -peptide. The method used was solution NMR, structure deposited on September 6, 2002 and released on February 11, 2003 (11).

The protein structures were superimposed and aligned on PYMOL v 2.3.4 with the *Super* command, which super aligns two protein selections. *Super* does a sequence-independent structure-based dynamic programming alignment (unlike the *align* command) followed by a series of refinement cycles intended to improve the fit by eliminating pairing with high relative variability. The *Super* command is more reliable than *align* for proteins with low sequence similarity.

To evaluate conservation and alignment of the A β and KL genomes across species, we used BLAT, the Blast-Like Alignment Tool of the UCSC Genome Browser (12). BLAT can align a user sequence of 25 bases or more to the genome. As some level of mismatch is tolerated, cross-species alignments may be performed provided the species have not diverged too far from each other; this capability allowed comparison of the Mouse Mammary Tumor Virus genome to the human genome (13). BLAT calculates a percent identity score to indicate differences between sequences without a perfect match (i.e., without

100% identity). The differences include mismatches and gaps (14).

Results

For KL and A β , Pymol performed 6 cycles of calculations on 165 aligned atoms, with a final root mean square deviation of atomic positions (RMSD) of 1.792 Å for 148 atoms. Amino acid residues phe76-val96 of KL aligned closely with residues asp7-asn27 of A β (Figs. 3 and 4).

The results of the cross-species comparison of A β revealed a high degree of alignment and conservation of human A β (chr 21q21.3) in the rhesus monkey and 27 other primates. The rhesus macaque diverged from ancestors of *Homo sapiens* approximately 25 million years ago (15). There was much less alignment and conservation in the mouse, dog, and elephant, even less in the chicken, western clawed frog (*Xenopus tropicalis*), zebrafish and lamprey (Fig. 5).

The results of the cross-species comparison of KL revealed a high degree of alignment and conservation of KL (chr 13q13.1) in the chimp and 27 other primates, with less alignment and conservation in the mouse, dog and elephant, even less in the chicken, western clawed frog (*Xenopus tropicalis*), zebrafish and lamprey (Fig. 6).

Discussion

A β is an ancient neuropeptide expressed in vertebrates. Many primate species share the human A β sequence, which has been highly conserved over millions of years (16). The conservation of KL is similar. The high degree of conservation suggests that both sequences play an important role in survival.

KL is a membrane protein that is related to β -glucuronidases, enzymes that break down carbohydrates. KL has tandem glucosidase domains, D1 and D2 (Fig. 1). Three subtypes of KL have been identified: α -KL, β -KL and γ -KL. Low levels of KL are present in patients with chronic renal failure. KL may be one element involved in degenerative processes, such as arteriosclerosis, osteoporosis and skin atrophy often observed in renal failure. Mutations in the KL protein have been associated with aging, bone loss and alcohol consumption (17,18).

In vivo, A β and KL may function like ubiquitin and the substrate proteins to which it binds. Ubiquitin is a small (8.6 kDa) regulatory protein present in most tissues of eukaryotic organisms, that is, it occurs ubiquitously (19). The conjugation and binding of ubiquitin to a substrate protein is called ubiquitination. Ubiquitination affects proteins in many ways. Ubiquitin can alter protein cellular location, affect protein activity, and promote protein interactions. Similarly, after A β conjugates and binds to klotho, A β and KL could enhance the marking of brain regions for delivery of fibroblast growth factor 21 (FGF21) (10).

FGF21 is neuroprotective and may delay the onset of AD. FGF21 is a circulating endocrine hormone, mainly secreted by the liver, mostly during fasting. FGF21 acts by binding to its receptor FGFR1 and co-receptor β -KL. FGF21 regulates energy consumption by influencing glucose and lipid metabolism. Deranged FGF21 signaling might account for some

forms of neurodegeneration, and FGF21 could be therapeutic in AD (20). Structurally, FGF21 is a 181 amino acid peptide (~22.3 kDa molecular mass) derived from a 209 amino acid mature protein encoded by the FGF21 gene located on chromosome 19.

ApoE4 is an independent risk factor for AD. KL can act on ApoE4 to prevent pathological β -amyloid production or deposition, enhance synaptic functions, and increased brain connectivity. The KL-VS status could thus mitigate ApoE4 risks for AD and could be used to further stratify individuals who carry APOE4 in clinical trials for the disease. KL itself could represent a therapeutic for the prevention or treatment of AD in individuals who carry ApoE4 (7). It would be vital in future molecular studies to factor in the relationship of ApoE4, klotho, and the occurrence of AD.

The present demonstration of amino acid residues phe76-val96 of KL aligning closely with residues asp7-asn27 of A β suggests that A β could enhance the ability of KL to draw FGF21 to regions of incipient neurodegeneration in AD. The problem arises with age. Older people do not heal or repair tissue damage as well as younger individuals. As neurodegeneration advances in an older individual, perhaps caused by neuroinflammation related to HSV-1 (21), increasing amounts of amyloid are produced, forming an adhesive web, as the brain tries to hold the pathologic process in check. Meanwhile, damage increases and spreads. Progressive neurodegeneration and cognitive decline are the outcome.

Further studies are required to explore these findings in depth. It would be worthwhile to examine the function of klotho and FGF21 in animal experiments.

Acknowledgements

Not applicable.

Funding

No funding was received.

Availability of data and materials

All data generated or analyzed during this study are included in this published article or are available from the corresponding author on reasonable request.

Authors' contributions

SL and PHR contributed equally to the study. Both authors were involved in the conception and design of the study, in data collection and analysis, as well as in the revisions of the manuscript. Both authors read and approved the final manuscript.

Ethics approval and consent to participate

Not applicable.

Patient consent for publication

Not applicable.

Competing interests

The authors declare that they have no competing interests.

References

- Hardy J and Allsop D: Amyloid deposition as the central event in the aetiology of Alzheimer's disease. *Trends Pharmacol Sci* 12: 383-388, 1991.
- Castellani RJ, Lee HG, Zhu X, Perry G and Smith MA: Alzheimer disease pathology as a host response. *J Neuropathol Exp Neurol* 67: 523-531, 2008.
- Castellani RJ and Perry G: The complexities of the pathology-pathogenesis relationship in Alzheimer disease. *Biochem Pharmacol* 88: 671-676, 2014.
- Soscia SJ, Kirby JE, Washicosky KJ, Tucker SM, Ingelsson M, Hyman B, Burton MA, Goldstein LE, Duong S, Tanzi RE, and Moir RD: The Alzheimer's disease-associated amyloid beta-protein is an antimicrobial peptide. *PLoS One* 5: e9505, 2010.
- Moir RD, Lathe R and Tanzi RE: The antimicrobial protection hypothesis of Alzheimer's disease. *Alzheimers Dement* 14: 1602-1614, 2018.
- Mangold CA and Szpara ML: Persistent infection with herpes simplex virus 1 and Alzheimer's disease-a call to study how variability in both virus and host may impact disease. *Viruses* 11: 966, 2019.
- Dubal DB, Zhu L, Sanchez PE, Worden K, Broestl L, Johnson E, Ho K, Yu GQ, Kim D, Betourne A, *et al*: Life extension factor klotho prevents mortality and enhances cognition in hAPP transgenic mice. *J Neurosci* 35: 2358-2371, 2015.
- Dubal DB and Yokoyama JS: Longevity gene KLOTHO and Alzheimer disease-a better fate for individuals who carry APOE ε4. *JAMA Neurol* 77: 798-800, 2020.
- Belloy ME, Napolioni V, Han SS, Le Guen Y and Greicius MD: Alzheimer's Disease Neuroimaging Initiative: Association of klotho-vs heterozygosity with risk of Alzheimer disease in individuals who carry APOE4. *JAMA Neurol* 77: 849-862, 2020.
- Lee S, Choi J, Mohanty J, Sousa LP, Tome F, Pardon E, Steyaert J, Lemmon MA, Lax I and Schlessinger J: Structures of β-klotho reveal a 'zip code'-like mechanism for endocrine FGF signalling. *Nature* 553: 501-505, 2018.
- Crescenzi O, Tomaselli S, Guerrini R, Salvadori S, D'Ursi AM, Temussi PA and Picone D: Solution structure of the Alzheimer amyloid beta-peptide (1-42) in an apolar microenvironment. Similarity with a virus fusion domain. *Eur J Biochem* 269: 5642-5648, 2002.
- Kuhn RM, Haussler D and Kent WJ: The UCSC genome browser and associated tools. *Brief Bioinform* 14: 144-161, 2013.
- Lehrer S and Rheinstein PH: Mouse mammary tumor viral env sequences are not present in the human genome but are present in breast tumors and normal breast tissues. *Virus Res* 266: 43-47, 2019.
- Bhagwat M, Young L and Robison RR: Using BLAT to find sequence similarity in closely related genomes. *Curr Protoc Bioinformatics* 10: Unit10.8, 2012.
- Rhesus Macaque Genome Sequencing and Analysis Consortium, Gibbs R, Rogers J, Katze MG, Bumgarner R, Weinstock GM, Mardis ER, Remington KA, Strausberg RL, Venter JC, Wilson RK, *et al*: Evolutionary and biomedical insights from the rhesus macaque genome. *Science* 316: 222-234, 2007.
- Moir RD and Tanzi RE: Low evolutionary selection pressure in senescence does not explain the persistence of Aβ in the vertebrate genome. *Front Aging Neurosci* 11: 70, 2019.
- Kuro-O M: Klotho. *Pflugers Arch* 459: 333-343, 2010.
- Kuro-O M: The Klotho proteins in health and disease. *Nat Rev Nephrol* 15: 27-44, 2019.
- Pickart CM and Eddins MJ: Ubiquitin: Structures, functions, mechanisms. *Biochim Biophys Acta* 1695: 55-72, 2004.
- Taliyan R, Chandran SK and Kakoty V: Therapeutic approaches to Alzheimer's type of dementia: A focus on FGF21 mediated neuroprotection. *Curr Pharm Des* 25: 2555-2568, 2019.
- Komaroff AL: Can infections cause Alzheimer disease? *JAMA* 324: 239-240, 2020.



This work is licensed under a Creative Commons Attribution-NonCommercial-NoDerivatives 4.0 International (CC BY-NC-ND 4.0) License.