

Figure S1. Emo represses the self-renewal and EMT progression of SW1990/GZ cells. (A) Cell sphere-forming rate evaluated using the sphere formation assay (x100 magnification). (B) Number of spheres measured using the colony-formation assay (x200 magnification). (C) Expression levels of CD44, ALDH1, Nanog and Snail as determined via western blotting. (D) Flow cytometry used to detect the apoptosis of cells. (E) Cell migration measured via Transwell assay (scale bar, 50 μ m). (F) Expression levels of vimentin and E-cadherin via western blotting. * P <0.05 vs. SW1990/GZ. ** P <0.01 vs. SW1990/GZ. Emo, emodin; GEM, gemcitabine; SW1990/GZ, GEM-resistant SW1990 cells; Snail, Snail family transcriptional repressor 1 gene; EMT, epithelial-mesenchymal transition; ALDH1, Aldehyde dehydrogenase 1; Snail, Snail family transcriptional repressor 1 gene.

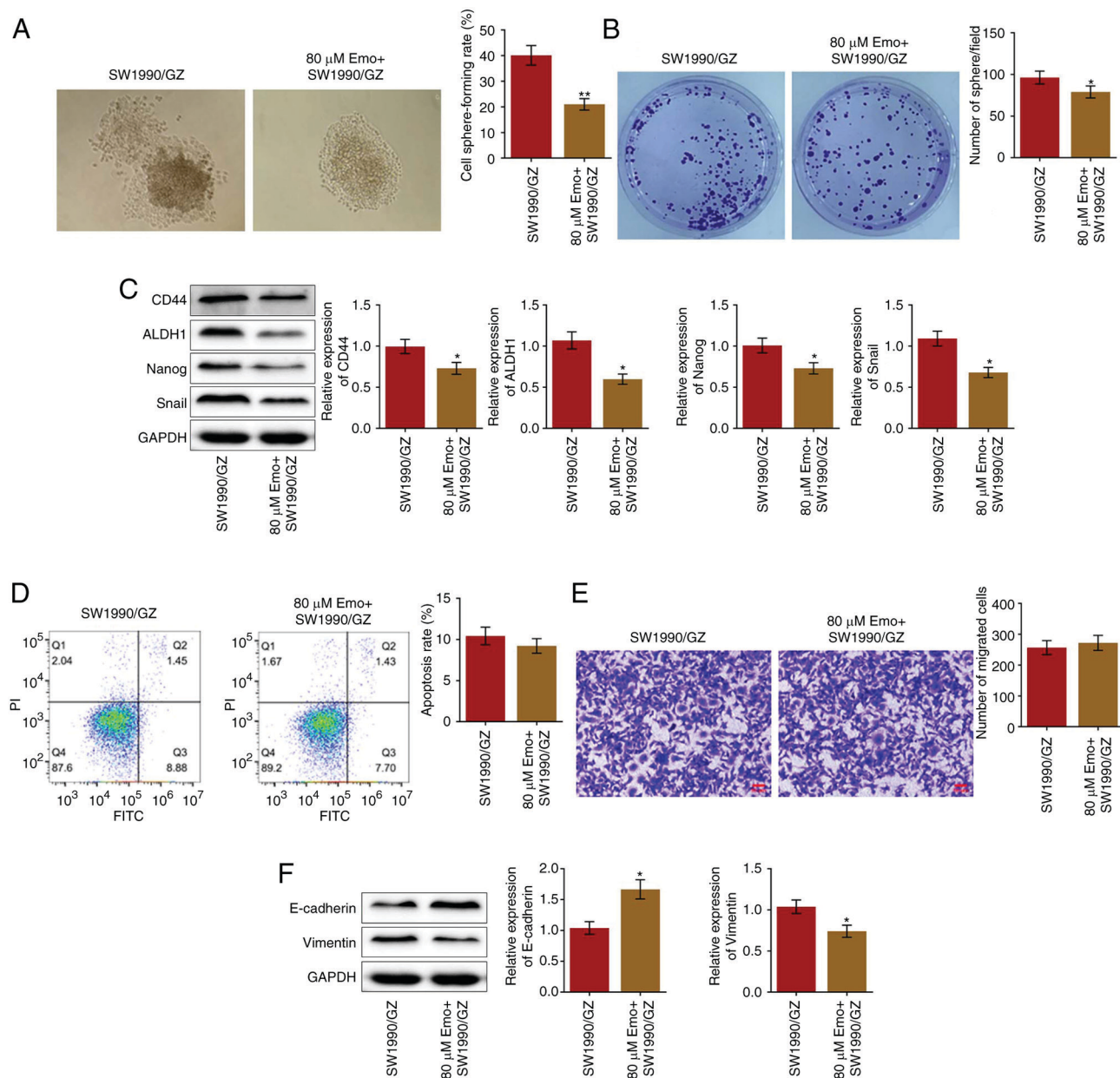


Figure S2. Snail-overexpressed SW1990/GZ cells. Expression level of Snail was determined via western blotting. * $P < 0.01$ vs. control. SW1990/GZ, GEM-resistant SW1990 cells; Snail, Snail family transcriptional repressor 1 gene; NC, negative control.

