

Figure S1. Macro-dissection of tumor tissue in core needle biopsy specimen (A) HE staining of core needle biopsy specimen. Magnification, x40. (B) Sample prior to macro-dissection (nuclear staining with neutral red). Magnification, x40. (C) Sample after manual macro-dissection. Magnification, x40. HE, hematoxylin and eosin.

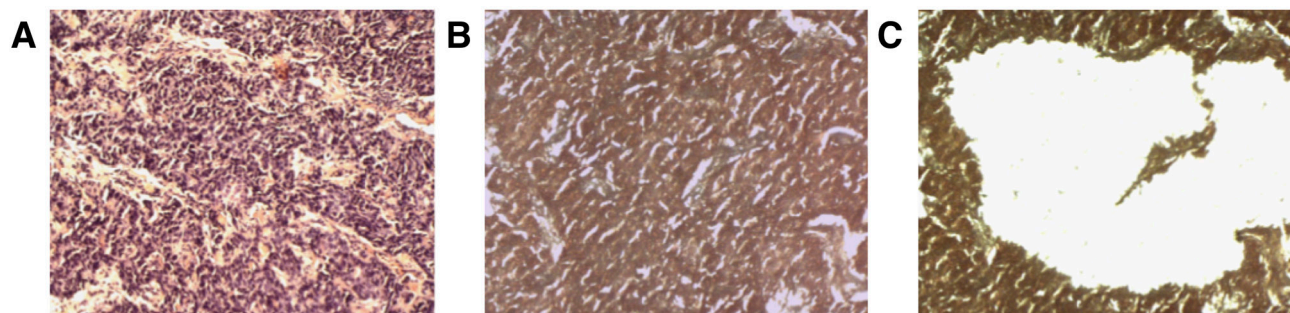


Figure S2. ROC curve of SPARC mRNA and pCR. Area under the curve 0.700. ROC, receiver operating characteristic; SPARC, secreted protein acidic and rich in cysteine; pCR, pathological complete response.

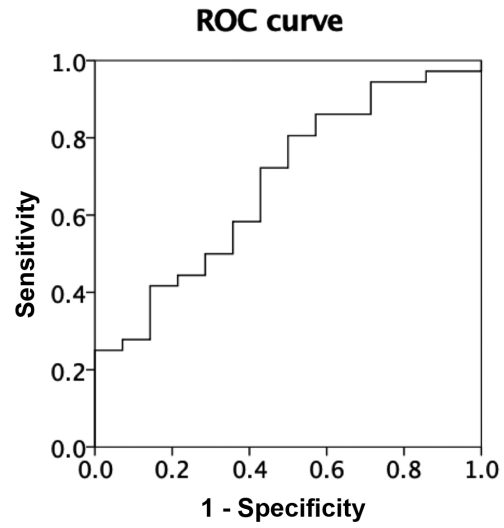


Table SI. List of assay IDs used for real-time PCR analysis.

mRNA	Assay ID	Gene symbol	Gene name
SPARC	Hs00234160_m1	SPARC	Secreted protein acidic and cysteine rich
TS	Hs00426586_m1	TYMS	Thymidylate synthetase
DPD	Hs00559278_m1	DPYD	Dihydropyrimidine dehydrogenase
MDR1	Hs00184500_m1	ABCB1	ATP Binding Cassette Subfamily B Member 1
MRP1	Hs00219905_m1	ABCC1	ATP Binding Cassette Subfamily C Member 1
TopoII $\alpha$	Hs03063307_m1	TOP2A	DNA topoisomerase II alpha
$\beta$ -actin	Hs00357333_g1	ACTB	$\beta$ -Actin